

HIDROSIB

S.A.



193rd Stefan Cel Mare str., 2400 Sibiu -Romania

330 l/min

315 bar

**Direct operated pressure
control valves
NB 6, 10,20,32**

FC - 7

GENERALITIES

Direct operated pressure control valve.

Manually adjusted, by hexagonal screw.

Pipe or manifold mounting.

PERFORMANCE DATA

GENERAL

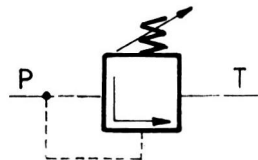
Fixing: Pipe or manifold mounting

Mounting position: unrestricted

Flow direction : P ->T

Temperature range of ambient medium : -20°C.....+50°C

Valve function



P-inlet
T-outlet

HYDRAULIC

Nominal pressure : 315 bar

Return line pressure (port T) : max 315 bar

Fluid :

Fluid type: additived mineral oil.

Viscosity range : 10 ...380 cSt

Temperature range : -25°C.....+80°C

Filtration: 25 - 30 μm

CHARACTERISTIC CURVES

Characteristical adjusting curves and application range:

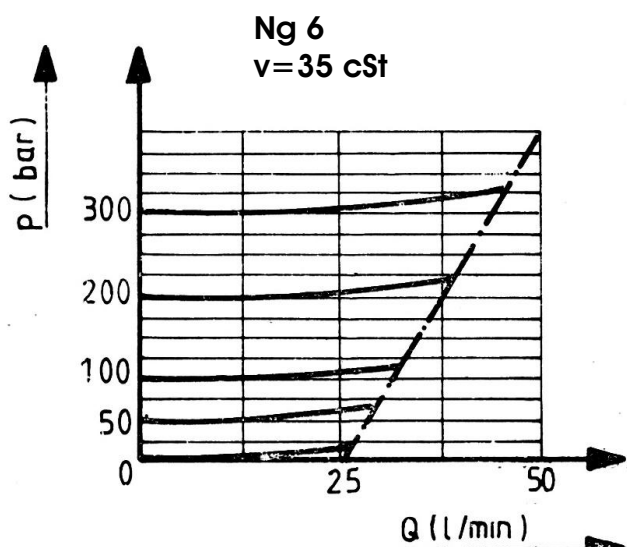


Fig.1

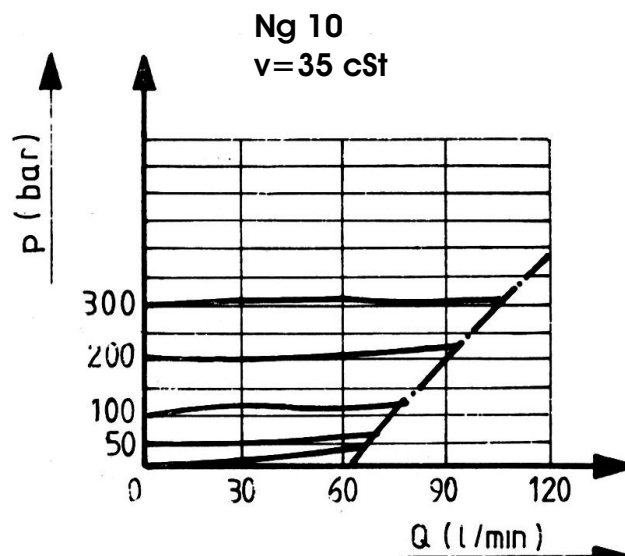


Fig.2

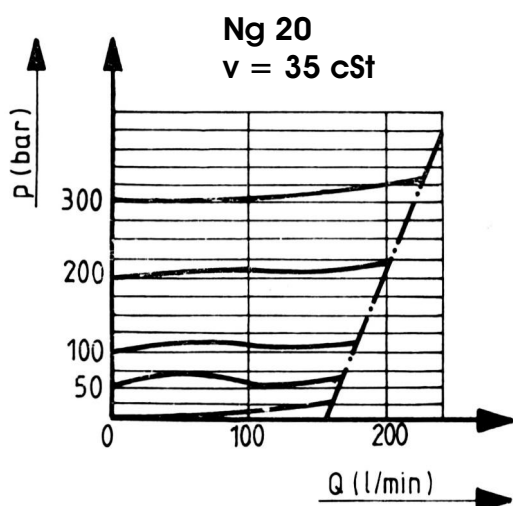


Fig.3

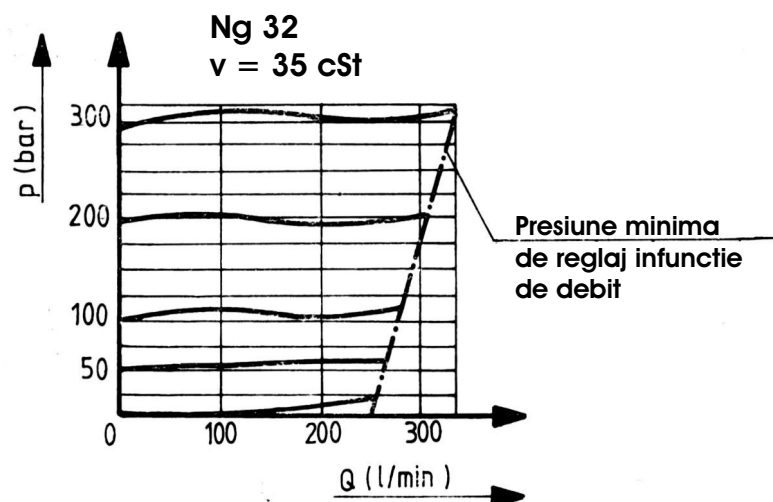


Fig.4

DIMENSIONS

Cartridge-type valves

Table 1

NG	Weight	L1	L2	hex 1	hex 2	hex 3	D1	D2	D3	D4	D5	L3	L4	L5	L6	L7	L8	L9	L10	$\alpha 1$	$\alpha 2$
6	~ 0,4Kg	67,5	140	32	19	13	M28x1,5	25H9	6	15	24,9	15	19	30	35	45	56,5±55	65			15°
10	~ 0,5Kg	81	151,5	36	19	13	M35x1,5	32H9	10	18,5	31,9	18	23	35	41	52	67,5±75	80	0,5x 45°	90°	20°
20	~ 1Kg	106	177	46	19	13	M45x1,5	40H9	20	24	39,9	21	27	45	54	70	91,5±85	110			
32	~ 2,2Kg	131	220	60	19	13	M60x 2	55H9	30	38,75	54,9	23	29	45	60	84	113,5±115	140			

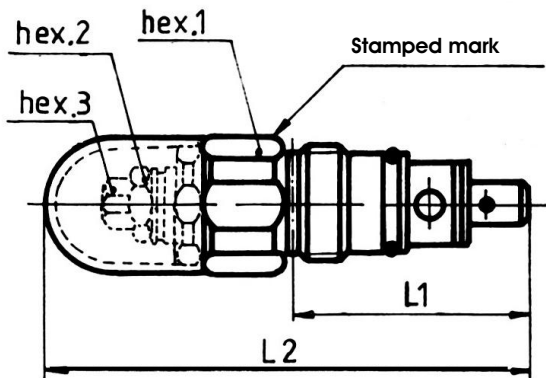


Fig. 5

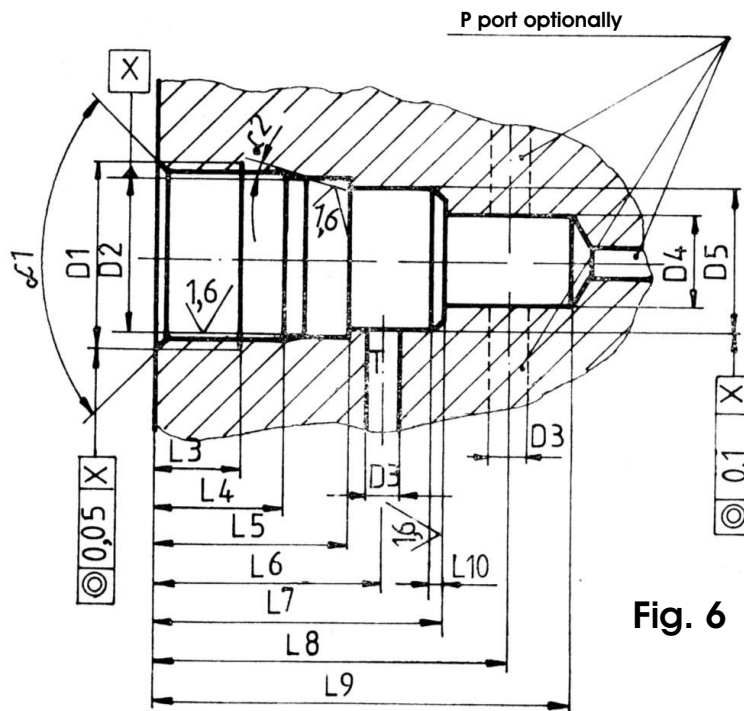


Fig. 6

Pipe mounting-type valves, screw adjusted

NG	Weight	B1	B2	D1	D2	D3	D4	H1	H2	L1	L2	L3	L4	L5	L6
6	~1,8Kg	45	60	20	M14x1,5	M6	6,4	25	40	156	80	55	35	15	10
10	~4,0Kg	60	80	28	M22x1,5	M8	8,4	40	60	173	100	70	49	22	10
20	~7,0Kg	70	100	40	M33x2	M8	8,4	50	70	205	135	100	66	32	15
32	~14,5Kg	100	130	56	M48x2	M10	10,5	60	90	267	180	130	95	45	25

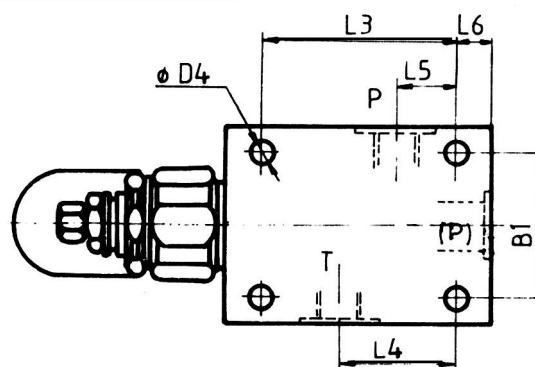
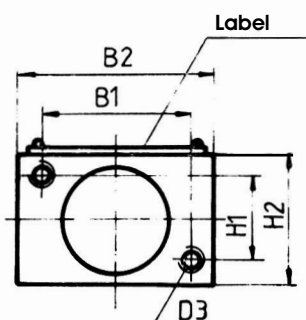
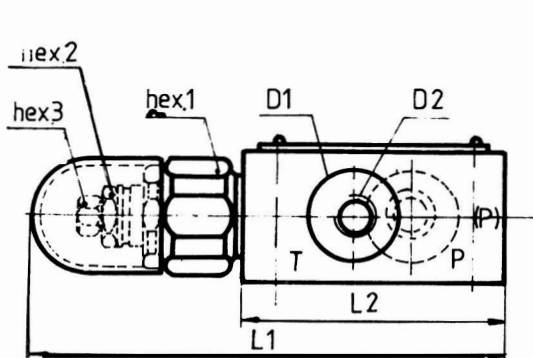


Fig. 7

MOUNTING DATA

Cartridge-type valves are mounted in hydraulic manifolds, placed according to figure 6. Tightening torque of valve's threaded fixing part: NB6 - 11^{+1} daNm ; NB10 - 13^{+1} daNm ; NB20 - 17^{+1} daNm ; NB32 - 20^{+1} daNm
SPipe mounting valves are mounted by fittings on hydraulic installation lines, using one or both P ports.

MODEL CODE

1 2 3-4.-5 6-7/*

*For climatic protected variant, add at the end of model code /T1 or T2

1. SD - Direct operated valve
2. Mounting type:
 - K - manifold
 - T - pipe
3. Nominal bore 6,10,32,20
4. OO - Pressure relief valve
5. Maximal adjusting pressure:
 - 1- 315 bar
 - 4- 50 bar
 - 7- 200 bar
 - 8- 100 bar
6. Adjusting type
 - S - by screw
7. O - Series.