

HIDROSIB
S.A.



193rd Stefan Cel Mare str., 2400 Sibiu -Romania

CHARACTERISTIC CURVES

Flow rate vs. throttle valve regulating stroke: $Q=f(s)$ - fig. 1

$\nu = 35 \text{ cSt}$

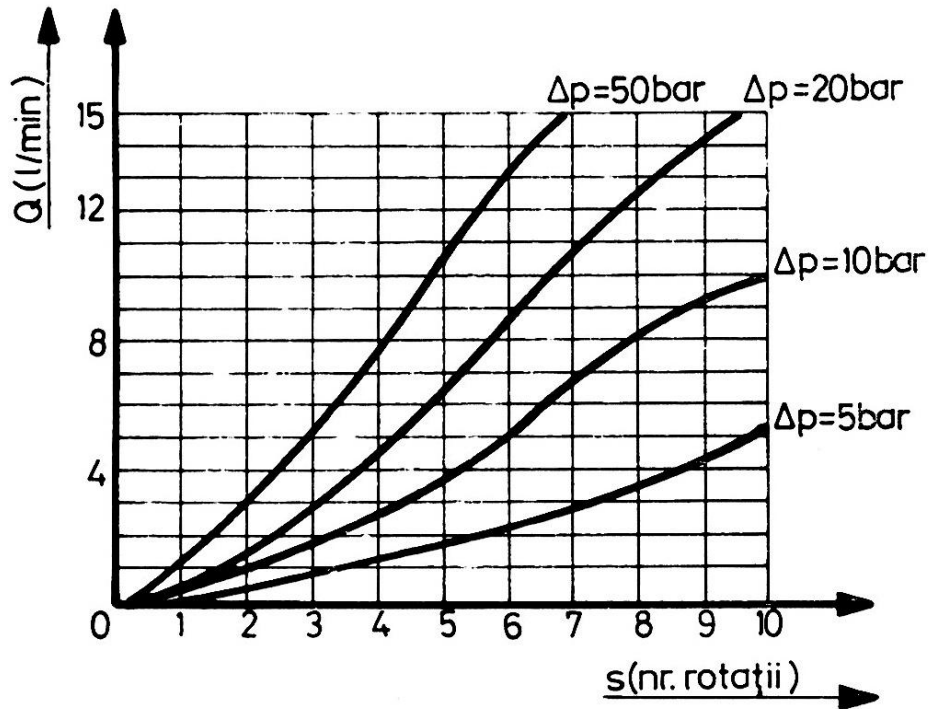


Fig. 1

Pressure drop across by-pass valve (B->A) vs. flow rate $\Delta p = f(Q)$ and through valve in completely open position (A->B) - fig.2

$\nu = 35 \text{ cSt}$

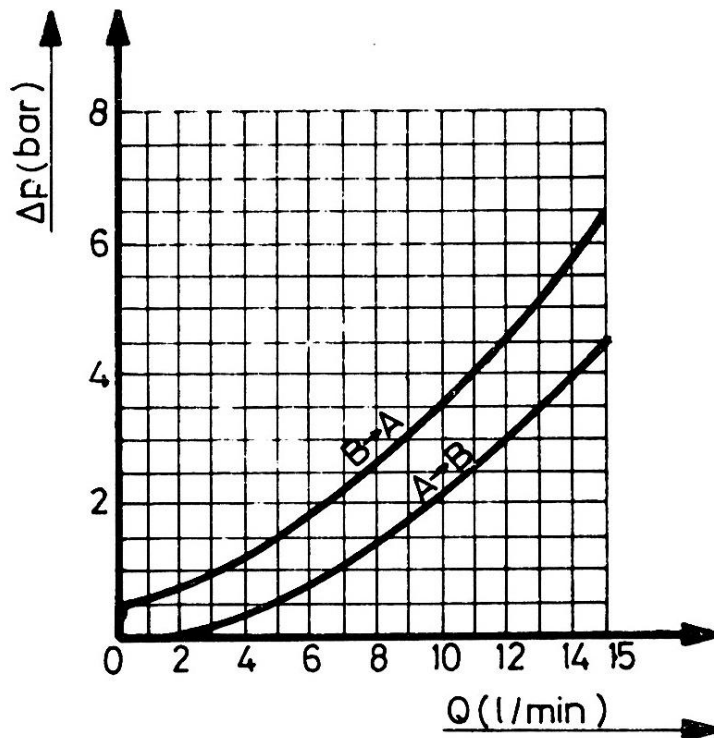
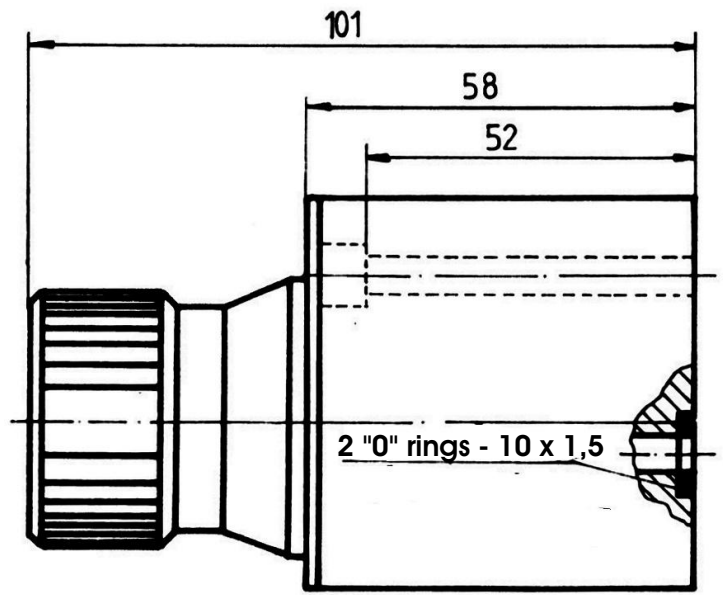
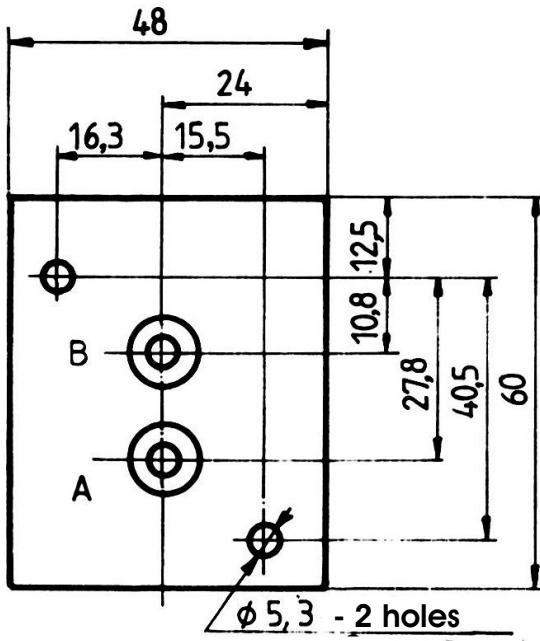


Fig. 2

DIMENSIONS



Weight: 1,3 Kg.

SUBPLATES

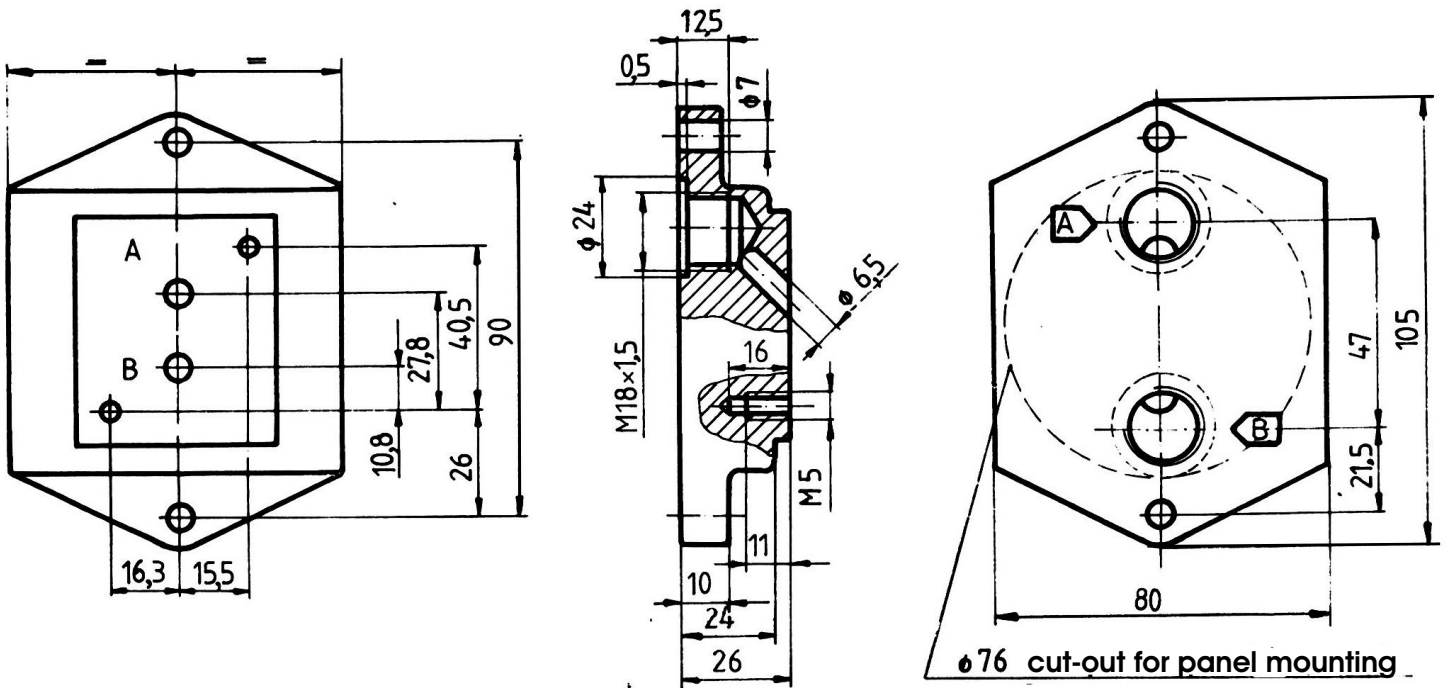


Fig. 4

- 2 fixing screws M 5x60 SR ISO 4762:1993 gr. 10.9. Tightening screws
 $0,6^{+0,2}$ daNm. Screws supplied with valve.

Model code: PBQ2P6-1

Weight: 0,7 Kg.

MODEL CODE

1 2 3 4 - 5 - 6/*

* For climatic protected model, add at the end of model code /T1 or T2

1. DR - Hydraulic restrictor
2. Integrated by-pass valve
 - 1 - with by-pass valve (one-way restrictor)
 - 2 - without by-pass valve (throttle valve)
3. Subplate mounting;
4. 6 - Nominal bore
5. G - Manual adjusting, by micrometer scaled rotary knob;
6. O - Series.