

HIDROSIB

S.A.



193rd Stefan Cel Mare str., 2400 Sibiu -Romania

120 ... 360 l/min

Throttle valves and one-way restrictors NB 10, 20, 32

FC - 15

315 bar

GENERALITIES

Throttle valves and one-way restrictors for subplate mounting.
With/without integrated by-pass valve.

Manual regulation.

Subplate mounting surfaces conform to ISO 5781.

PERFORMANCE DATA

GENERAL

Connecting: subplate

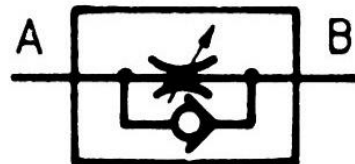
Mounting position: unrestricted

Symbol:

for throttle valves



for one-way restrictors



Temperature range for ambient medium : $-20^{\circ}\text{c} \dots +50^{\circ}\text{c}$

Fluid flow direction:

for throttle valves A->B si B->A

for one-way restrictors A -> B

HYDRAULIC

Nominal pressure : 315 bar

Nominal flow, at

**$\Delta p = 1 \text{ bar} + \text{cracking pressure}$: NB 10: 120l/min; NB 20: 240l/min;
NB 32: 360l/min**

**Cracking pressure of
by-pass valve:**

0,3 bar

Fluid :

Fluid type: additived mineral oil.

Viscosity range : 10 ...500 cSt

Temperature range : -20°C.....+80°C

Filtration: < 25 μm

CHARACTERISTIC CURVES

Flow rate vs. regulating stroke $Q = f(s)$

NB 10

$\nu = 35 \text{ cSt}$

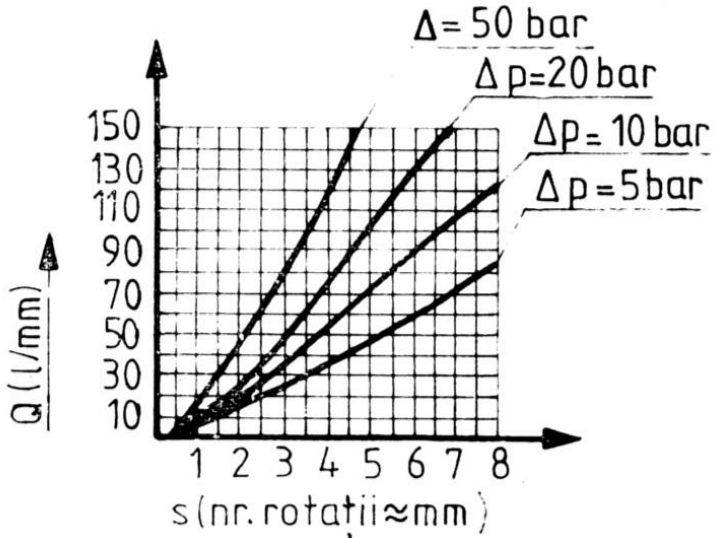


Fig. 1

NB 20

$\nu = 35 \text{ cSt}$

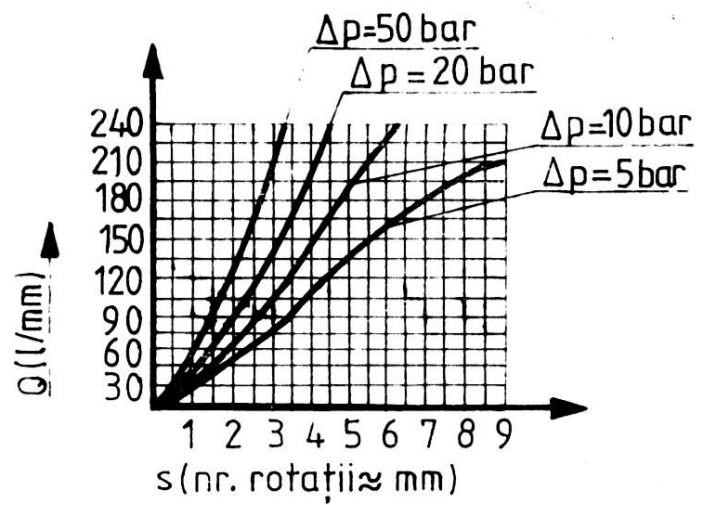


Fig. 2

NB 32

$\nu = 35 \text{ cSt}$

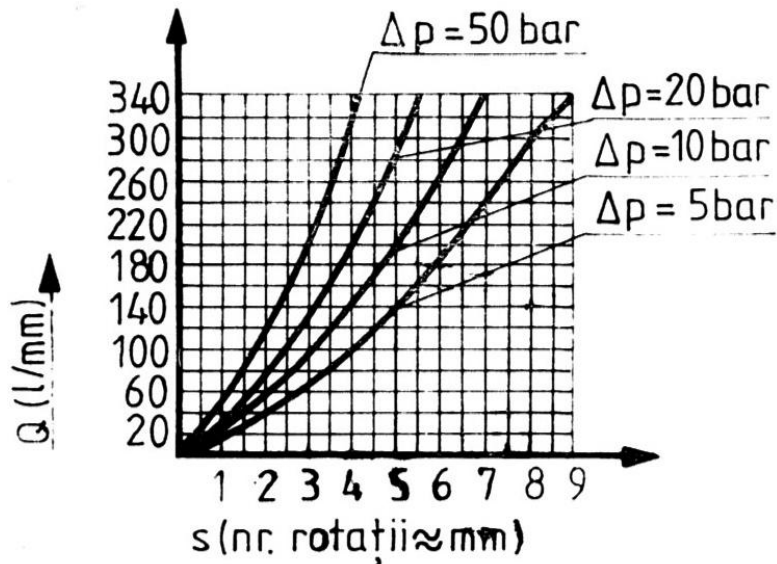


Fig. 3

Pressure drop across by-pass valve vs. flow rate,

$$\Delta P_{B-A} = f(Q)$$

NB 10

$\nu = 35 \text{ cSt}$

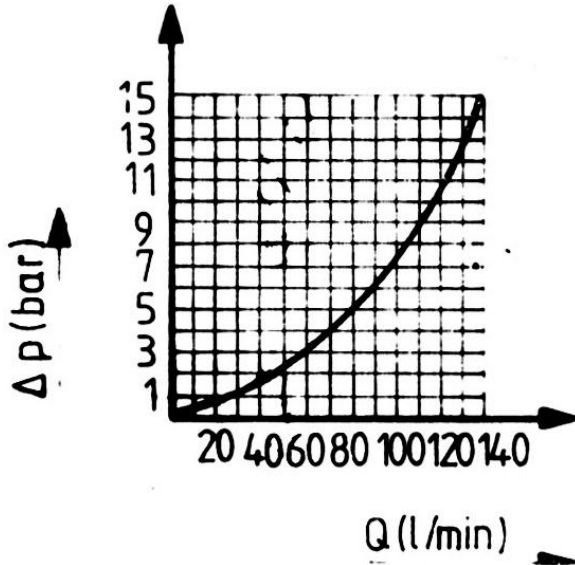


Fig. 4

NB 20

$\nu = 35 \text{ cSt}$

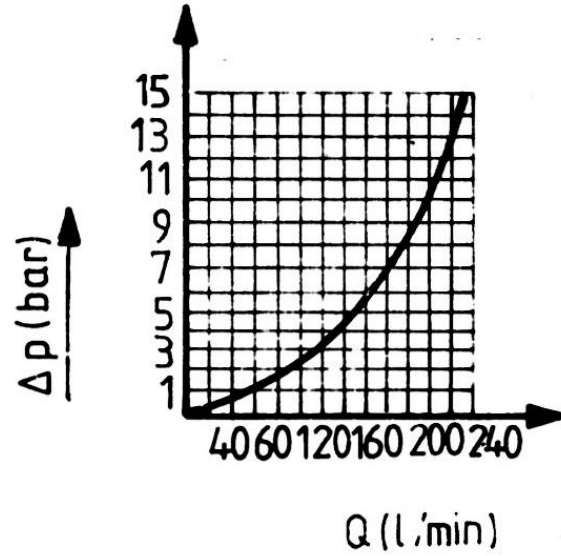


Fig. 5

NB 32

$\nu = 35 \text{ cSt}$

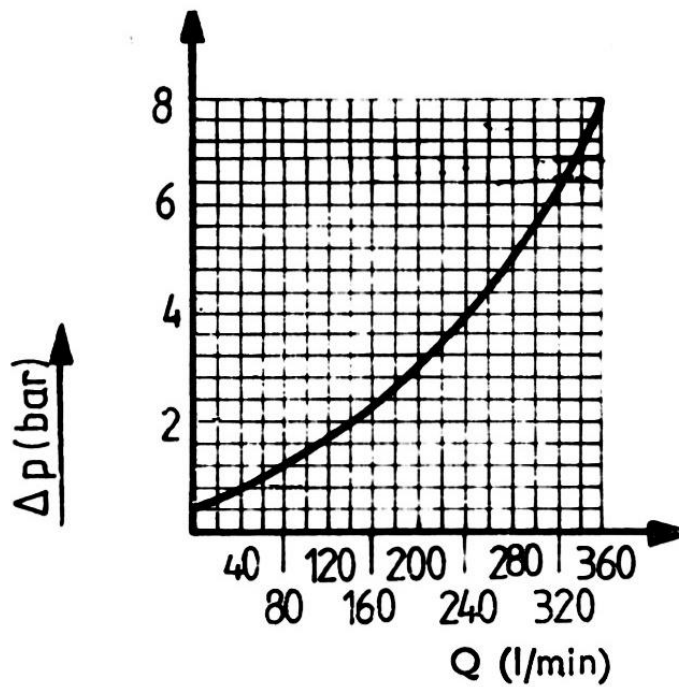


Fig. 6

DIMENSIONS

NB 10

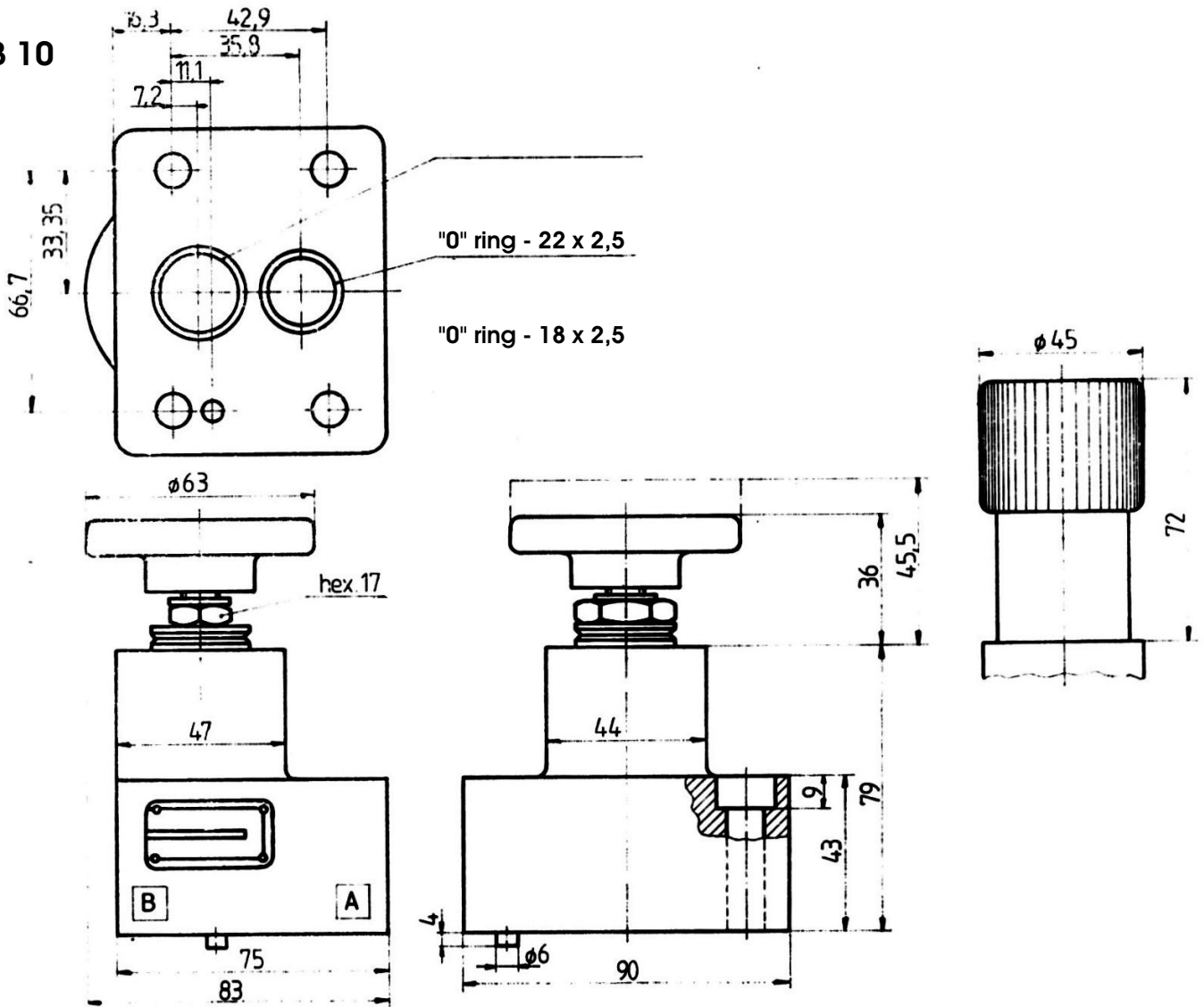


Fig. 7

NB 20

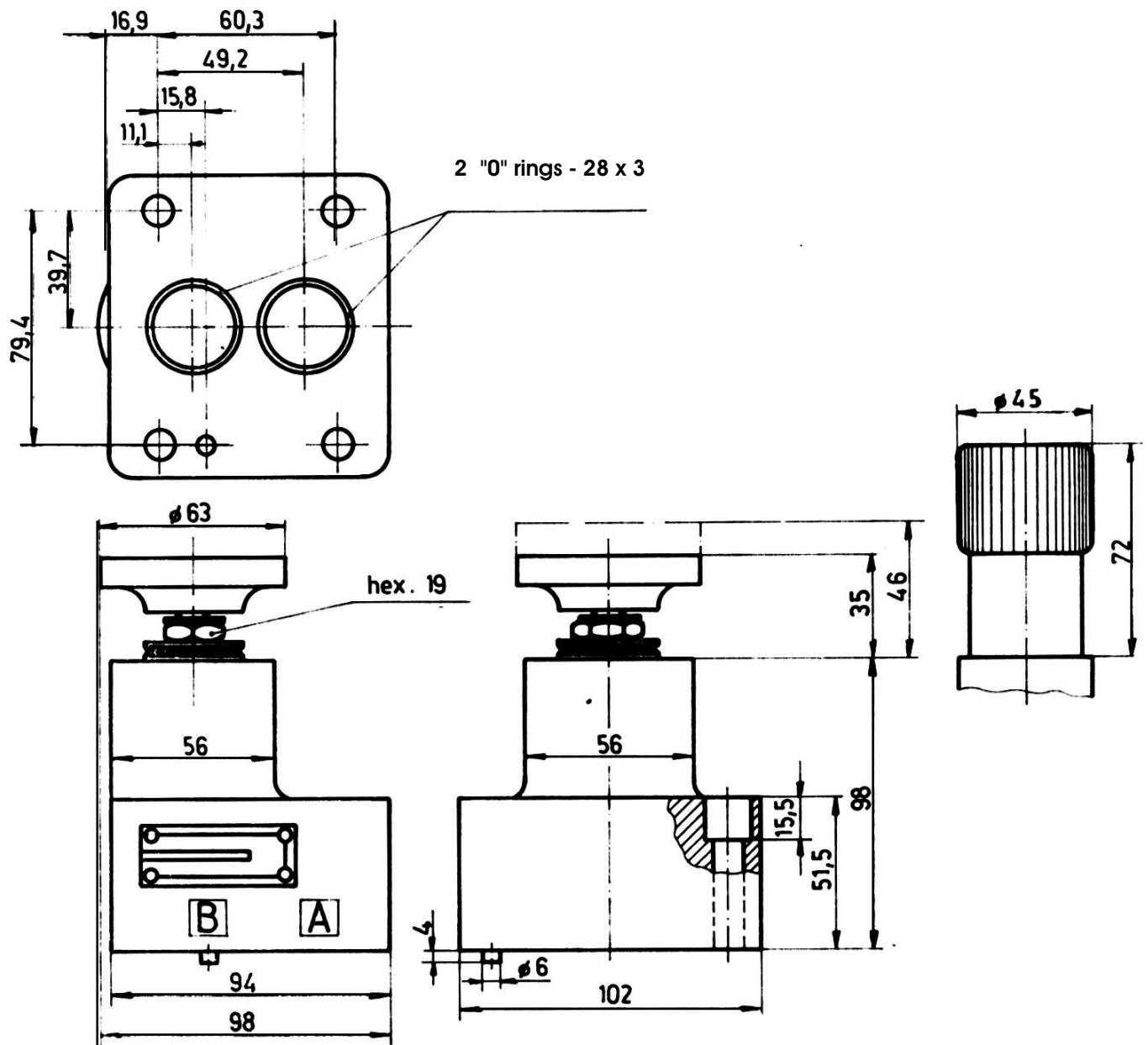


Fig. 8

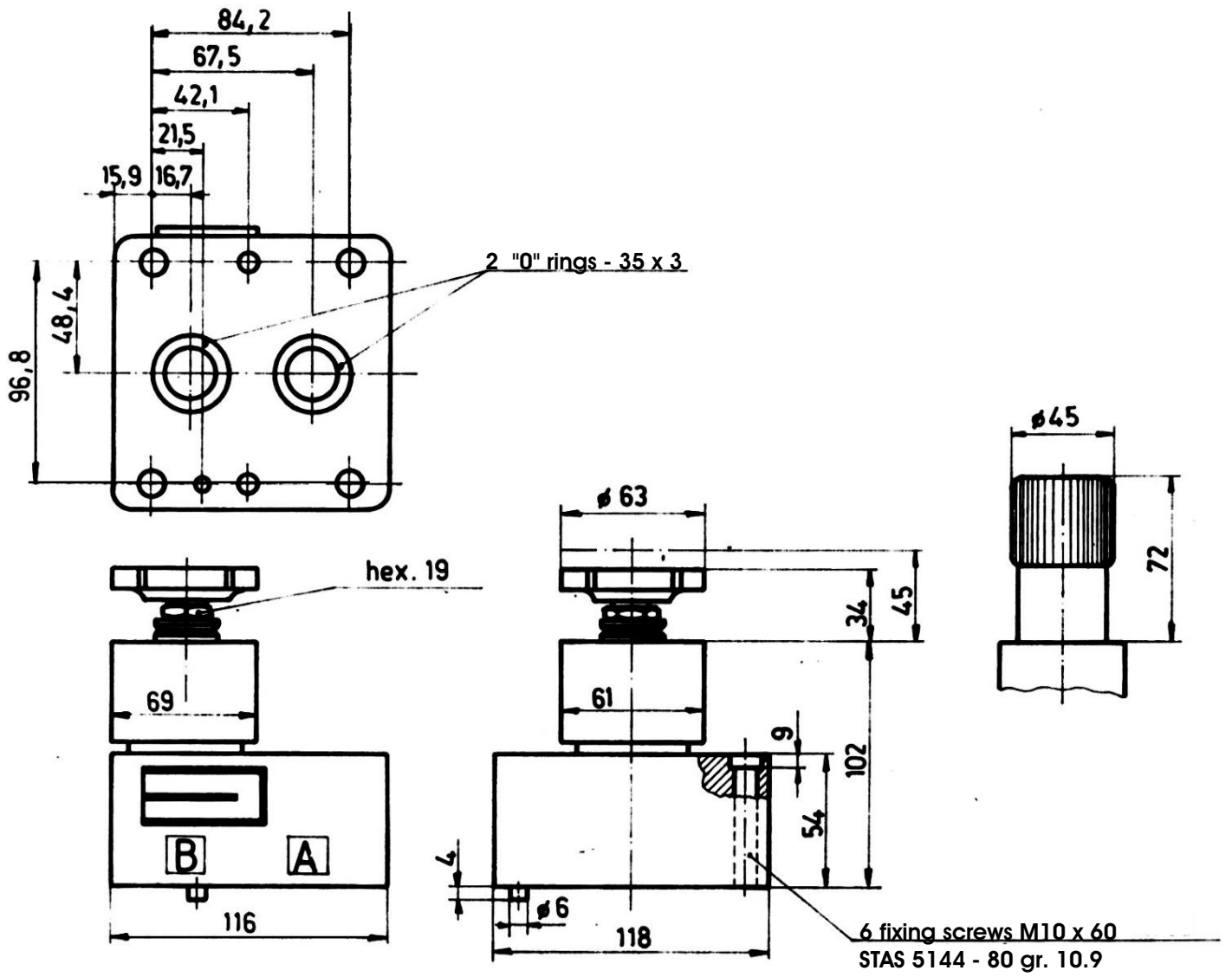


Fig. 9

SUBPLATES

NB 10

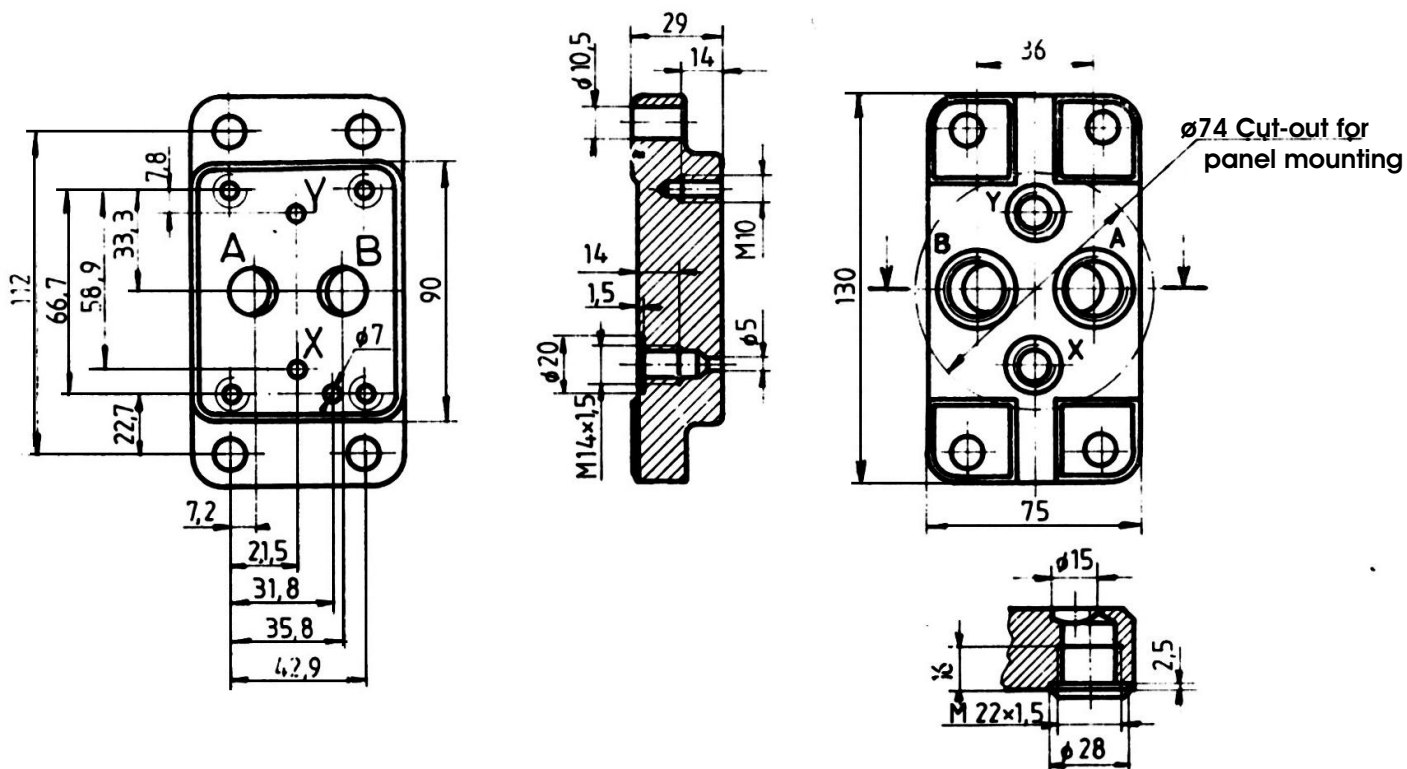


Fig. 10

Weight: 1,3 Kg

NB 20

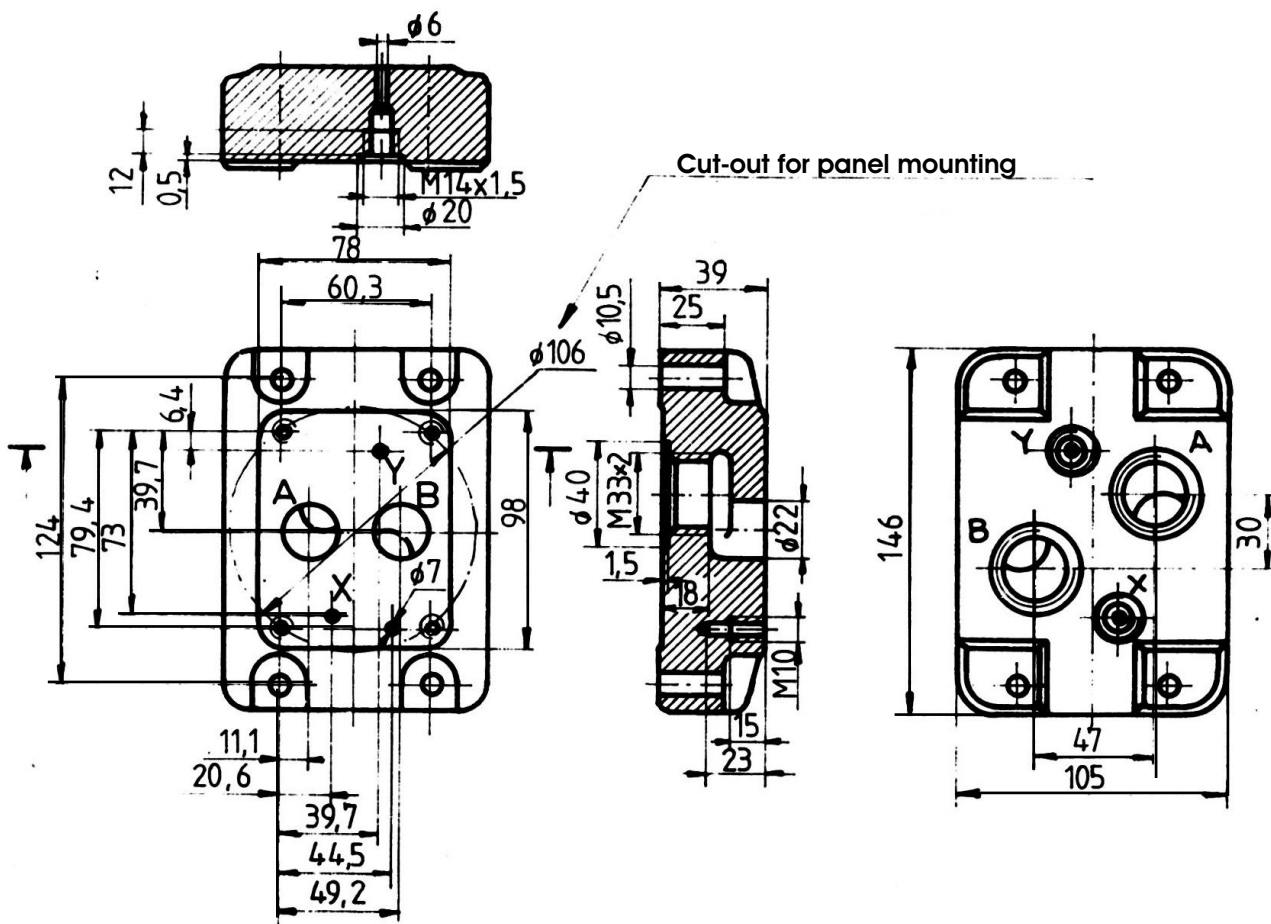


Fig. 11

Weight: 3,4 Kg

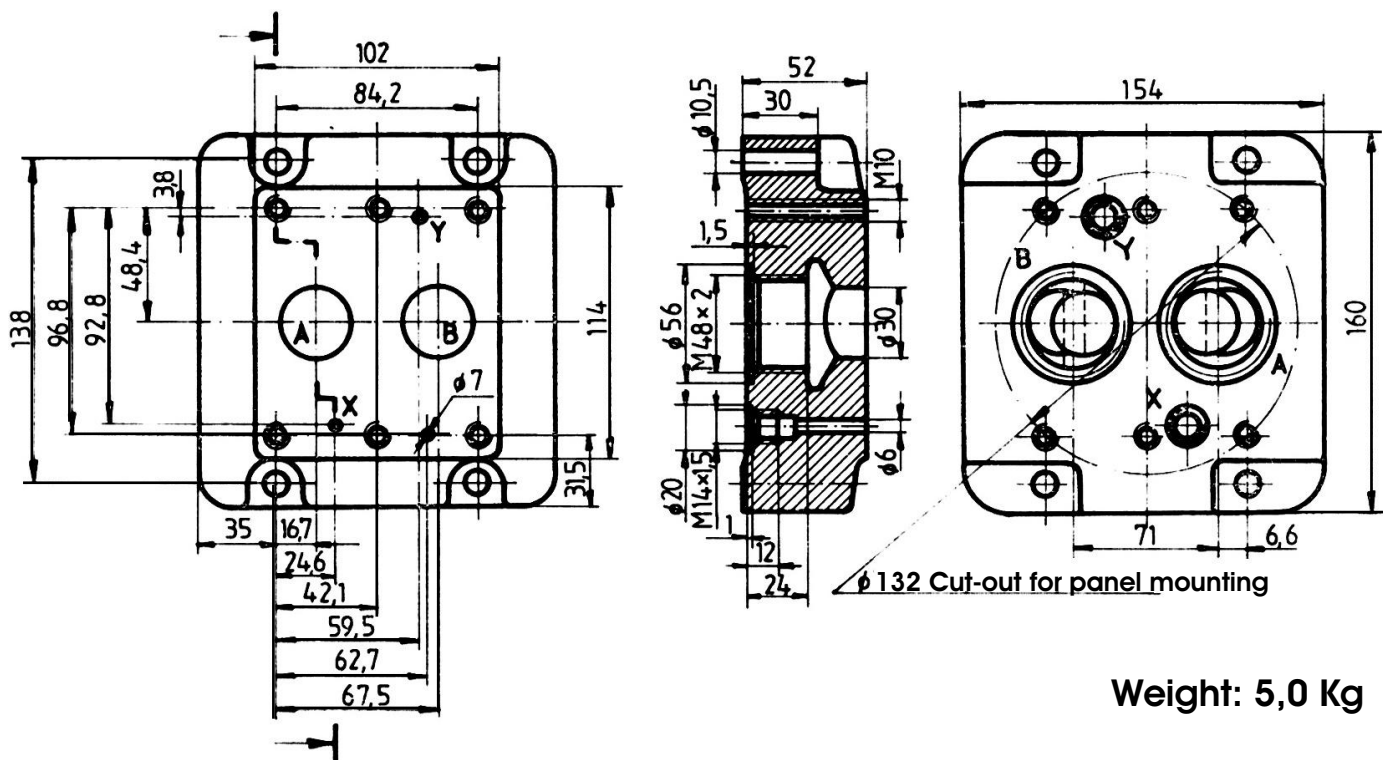


Fig. 12

NB	Model code	Fixing screws	Tightening torque	Units	Weight (kg)
10	PBS 10-1	M 10 x 45 SR ISO 4762: 1993 gr. 10.9	5+1,8	4	1,300
20	PBS 20-1	M 10 x 50 SR ISO 4762: 1993 gr. 10.9	5+1,8	4	3,400
32	PBS 32-1	M 10 x 60 SR ISO 4762: 1993 gr. 10.9	5+1,8	6	5,000

MODEL CODE

1 2 3 4 - 5 - 6/*

* For climatic protected model, add at the end of model code /T1 or T2

1. DR - Hydraulic restrictors
2. Throttling:
 1. single way (one-way restrictors)
 2. both ways (throttle valves)
3. P - Subplate mounting
4. Nominal bore: 10, 20, 32
5. Adjusting device:
 - M - hand wheel
 - G - micrometer scaled rotary knob
6. O - Series.